



Artist News Clippings

SOLUNA
FINE ART



Song Kwang-Ik | b.1950, Korea

SOLUNA
FINE ART



SUMMARY

English

- **Econovill** (13 Nov, 2019)
- **LIFESTYLE ASIA** (3 Jan, 2020)
- **Whitewaller** (May, 2021)
- **Tatler** (8 Oct, 2021)
- **Tokyo Art Beat** (Apr, 2022)

Chinese

- **Korean Cultural Centre** (26 Nov, 2019)
- **JET Magazine** (5 Dec, 2019)

Korea

- **Daily.hankooki** (14 Nov, 2019)

**Please note: next pages ordered by date of release (from En to Cn to Kr).*



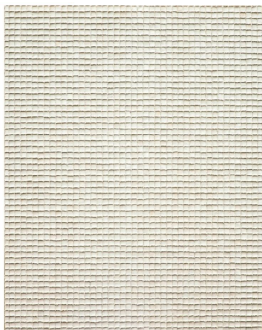
이코노믹 리뷰

☞ 기업 | 금융/증권 | 건설/부동산 | 바이오 | 피플/라이프 | 종합 | ESG | 오피니언 | 보도자료

🏠 홈 > 라이프 > 문화

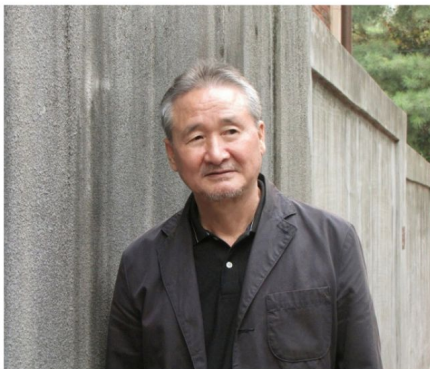
Hanji Artist SONG KWANG IK · ‘Paperlogue’ exhibition, Nov.22,2019 to Jan.9,2020 ,Soluna Fine Art Gallery, Hong Kong

📄 권동철 미술칼럼니스트 | © 입력 2019.11.13 16:24



▲ Hanji Paper (Kwang Ik, 2019)

Within the exhibition, Soluna Fine Art Gallery(솔루나 파인 아트 갤러리, 홍콩) will present nine works that demonstrate the artist's delicate technique in manipulating Hanji(Korean paper) to create sculptural-like paper works that can be envisaged and reimagined as Asian and Oriental architecture.



▲ Artist SONG KWANG IK(화가 송광익)

Hanji paper has been one of the greatest and oldest inventions of my own culture, and it is a very appropriate material for me to use in my art. The flexibility in paper allows it to adapt to a variety of changes and manipulations, which provides me room and freedom to work with.

(서양화가 송광익, 송광익 작가, 송광익 화백, 한지작가 송광익, 한지추상화가 송광익, KOREA PAPER, 宋光翼, ソン・グワンイク) want to reveal the spatiality and the refraction of light, the translucency and the penetrability between space.

Hanji made of paper mulberry is a material that breathe and whispers. It communicates. It is both visible and invisible, which is different than the modern paper that we are used to."

<Among the interviews with painter Song Kwang Ik and managing director Lee Gye sun of Tong-in Gallery/종이회화 송광익-통인갤러리 이계선 관장 인터뷰 중에서>

◇ On the Selection of Hanji

"Prior to 2000, I worked with a variety of materials and objects as well as oil paint, but experiment emerged. There is a saying in Korea that 'stagnant water is bound to corrupt.' I think as an artist I have to keep pushing boundaries until the end.



hankooki.com | 데일리한국 | 스포츠한국 | 주간한국 | 문화한국

데일리한국 대한민국 평균 신용등급은 696점, 나의 신용등급은?

[산업](#)
[소비자생활](#)
[금융 증권](#)
[경제 부동산](#)
[정치 사회 글로벌](#)
[지역](#)
[오피니언 기획](#)
[연예 스포츠 문화](#)
[포토뉴스](#)

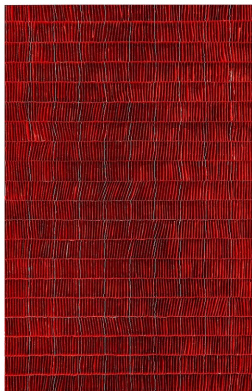
Google 광고
 의견 보내기 | 이 광고가 표시된 이유

[홈](#) > [연예 스포츠](#) > [문화](#) > [미술](#)

종이회화 송광익, 홍콩 ‘솔루나 파인아트갤러리’초대전, 11월22~내년1월9일

[A](#) 권동철 미술전문기자 dickwon531@hankooki.com | © 승인 2019.11.14 14:43

[가](#)
[가](#)
[가](#)
[f](#)
[t](#)
[o](#)
[b](#)
[s](#)



지물(紙物, paper things), 한지에 아크릴(Acrylic on Hanji) 100×60w, 2018

이번 'Paperlog'전은 홍콩 솔루나 파인아트 갤러리(Soluna Fine Art Gallery, Hong Kong)에서 11월22일부터 2020년 1월9일까지 송 광익의 간결한 짜임새와 은속의 현대성을 선사하는 작품세계를 선보인다.



지물(紙物, paper things), 한지에 먹(Chinese Ink on Hanji) 140×110w, 2018

송광익 작가는 통영갤러리(Tong-in Gallery) 이계신 운영(Managing Director Lee Gyesun)과의 인터뷰에서 "나는 종이로 가지고 있는 역사성과 유연하고 자유롭게 만들 수 있는 가능성을 보았다. 무수한 종이들이 만들어 내는 공간감과 빛의 굴절, 반투명성, 서로 부딪힐까 흔들림, 그리고 공간과 공간을 통하여 하는 투과성을 드러내고 싶었다."라고 밝혔다.

빛의 굴절, 반투명성, 부딪힘과 흔들림, 공간과 공간을 통하는 현대성



지물(紙物, paper things), 한지(Hanji) 140×110cm, 2019

한지(Hanji, KOREA PAPER)에 조각성과 건축적조형성을 부여, 빛의 투과가 빚어내는 우주의 심원한 원초성과 현대거대도시의 함축이라는 상상력을 불러일으키는 송광익 화백(서양화가 송광익, Artist SONG KWANG IK)이 초대전을 갖는다.



Korea Cultural Centre

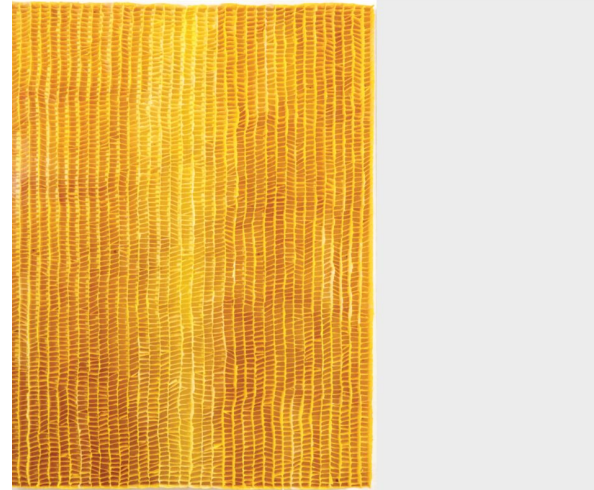
<https://hk.korean-culture.org/en/932/board/676/read/100939;jsessionid=pYtnNvYiAK0xU0Ez1nWKmi+e.kocc20>

Posted Nov 26, 2019



[E-Newsletter] Korean Cultural News 26.11.2019 2019-11-27 17:67 Hk

안녕하세요!
Welcome! VOL.05 | NOV.26 / Webversion



宋光翼 《紙語》
Song Kwangik: Paperlogue

自2019年的Art Central後，韓國藝術家宋光翼再度踏足，舉行他的首次個人展覽！宋作家與韓紙的相遇大大影響他的創作方向，今次展覽就以《紙語》為名，展出多件以韓紙創作的代表作品！快點去Solana Fine Art參觀，感受一下韓紙藝術品的魅力吧！

Korean artist Song Kwangik is holding his first solo exhibition 'Paperlogue' after his successful debut at Art Central 2019. By applying or scattering paint on hanji (Korean Paper), Song's artworks resemble a sense of nature and history. Visit Solana Fine Art now to explore the charms of hanji art-pieces!

日期及時間:
2019年11月22日-2020年1月9日
22.NOV.2019 - 9.JAN.2020
10am-6pm / 上午10時-下午6時

地點:
Solana Fine Art
1.2222222222



JET magazine
2019年12月5日下午2:30 · 🌐

【EYE Exhibition】紙藝無為

對觀賞者而言，畫作、雕塑等作品本身是藝術的呈現，但對創作的藝術家而言，作品未必是全部，創作的過程同樣能體現藝術。在前者看來抽象無為，後者卻能在創作、製作藝術品時，透過純粹無念的行為進入一種冥想的狀態。藝術家宋光翼正正是韓國抽象藝術的獨特人物，有別於著名的單色畫派別，他更擅長融合繪畫與雕塑的創作方式，將傳統韓紙（Hanji）化為帶有三维結構的畫作。所謂韓紙，本是以生於韓國高原的構樹樹皮製作的粗糙維手造紙，藝術家利用其滲透不均的特性，讓紙張染上自然隨性、深淺不一的色彩；後再將經過染色的韓紙親手撕開，重組成不同的「建築」結構，營造出看似平面，實質立體的紙雕畫。作品風格雖簡約單調，創作過程卻繁瑣重複，要求極致專注和投入，看似無為，實際上無所不為。

《宋光翼：紙語》展覽

日期：即日至2020年1月9日

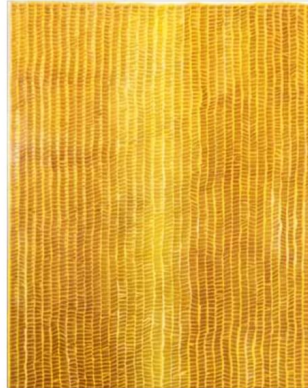
地點：Soluna Fine Art（上環西街52號地舖）

時間：星期一至六早上10點至晚上6點

Follow us on Instagram

<http://instagram.com/jetmaghk>

#JetHK #JetArt #EYExhibition Soluna Fine Art








LIFESTYLE ASIA

WHAT'S ON FOOD & DRINK STYLE CULTURE BEAUTY & GROOMING LIVING

Culture 03 Jan 2020 04:38 PM

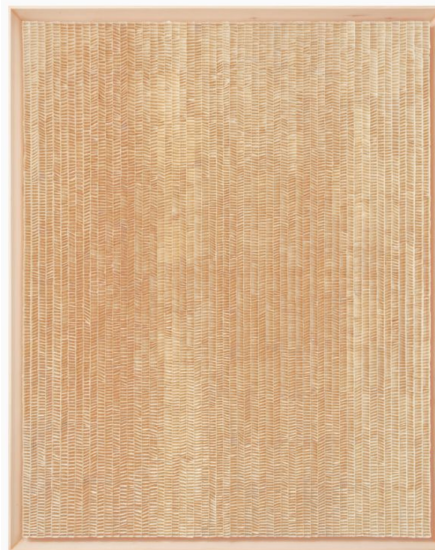
10 must-see art exhibitions in Hong Kong in January 2020

EVELYN LOK Managing Editor

share this article   

Add a splash of colour to your January by checking out some exceptional art at these new and running exhibitions in Hong Kong.

Song Kwangik: Paperlogue



'Paper Things #1' (2018) by Song Kwangik.

When: Through 31 January

Over at Soluna Fine Art, Song Kwangik's delicate paint-on-paper works are made from *hanji*, traditional Korean paper made from the paper mulberry tree, devoting energy and consideration to the plant-based canvas as material itself in his craft. Layering the *hanji* into honeycombs of infinite lines and planes, Song creates mesmerising matrices that demand close contemplation.

Soluna Fine Art, G/E, 52 Sai Street, Sheung Wan, Hong Kong, +852 2955 5166



Whitewaller

<https://whitewall.art/whitewaller/hong-kong/art-central-hong-kong>

Posted May, 2021

whitewaller

ART CENTRAL HONG KONG

whitewaller

Art Central Hong Kong launches this week at the Hong Kong Convention and Exhibition Centre, open May 20–23, and free to the public with advanced registration. Presented in partnership with UOB, the fair's sixth iteration will see international presenters across four platforms, including the Central Galleries sector, galleries bringing curated booths and solo shows of artists, and a dedicated selling exhibition titled "Here/There." The fair includes a program of accompanying talks, and a sculpture and installation lineup.

In the Central Galleries sector, fairgoers will find presentations from established galleries and artists like Chan Wai Lap and Anjela Yuen at *Contemporary by Angela Li*; a show of paintings by the ink and calligraphy artist Chui Pui Chee at *Gallery Jeeum*; Karin Weber Gallery's group presentation of names like Carmen Ng, Eric Fok, and Hung Lee; and work by Lee Kang-hyo and Song Kwang Ik at *Soluna Fine Art*.

Specializing in showcases of up to three artists, the Curated Booths platform includes LEE & BAE's trio presentation of Sang-Sun Bae and You-Mee Lee, as well as design art by Shiro Kuramata and Ettore Sottsass at *Novalis Contemporary Art Design*. And in the Solo Presentations sector, Stefano Perrone is on view with Jason Shin, Artspace K is showing Ah Leon, and Matías Sánchez works at *Galerie Zink*.



CULTURE | ARTS

8 Galleries You Shouldn't Miss at Fine Art Asia 2021

Writings by JIANNE SORIANO | October 08, 2021



7. Soluna Fine Art



ABOVE: Photo: Soluna Fine Art

Soluna Fine Art, considered a pioneer in Asian fine art in Hong Kong with roots in South Korea.

They are exhibiting works from renowned Korean artists such as Kim Kuen-tai, Lee Gee-jo, Lee Kang-hyo, Song Kwang-ik as well as new works by Kim Duck-yong and Kim Joon-young—all forming an eclectic mix of fine artworks.

One of the highlight pieces is Lee Gee-jo's moon jar, a distinctive type of porcelain originating from the late Joseon period. They were named after the moon as their shape resembles that of a full moon.

Location: Booth C8

In case you missed it: [8 Things to See at](#)

This website uses cookies to improve your experience. See our [privacy policy](#)

ACCEPT



Home / Events / Song Kwang Ik "Jimul"

Events

Venues

News / Articles

Search

日本語 | English



Sign up for our newsletter.

About TAB About advertising on TAB



[Image: Song Kwang Ik "Paper Things" (2019), mixed media on panel, H140 x W110 cm/ H55.1 x W43.3 inches]

Song Kwang Ik "Jimul"

Sokyo

Artists

Song Kwang Ik

Song Kwang Ik, who sublimes Korean hanji paper into figurative works with delicate and skillful techniques, is a painter with a new approach that challenges the stereotypes of painting and sculpture. This exhibition, his first solo exhibition in Kyoto, will feature a total of nine works created between 2018 and 2021.

Hanji has been made in Korea for more than 1000 years. Song is very interested in this material and has given his own work the title "Jimul" (paper works). He says the following about hanji: "I want to reveal spatiality, refraction of light, translucency, and permeability between spaces. Hanji, made from mulberry, is a material that breathes and whispers. It communicates in visible and invisible ways. Hanji differs from modern paper in this respect."

Having been used since ancient times for house fittings and books such as sutras, hanji is a strong and durable material with a strong life span, yet it is flexible and can be easily processed. To accentuate the unique qualities of the material and take advantage of its texture, colors are applied to the back of the paper, rather than to the front, leaving the ink unevenly stained by the fibers. After the colors are applied, the paper is torn and folded by the artist's own hand, and becomes a piece that composes the screen. The patterns that appear on the screen are influenced by the traditional window frames of Korea, the lined patterns of the Yeongryeo Tae-mang Taejo Sutra, and the geometric decorative patterns of the Islamic world and China. The design is said to have been influenced by the traditional Japanese style.

Just as it takes many processes and a long time to produce a sheet of hanji, Song's works are created through the repetition of extremely delicate movements, and in this process, his hanji becomes more than just a material; it becomes an expression of the artist's very life and the truth of existence.



The End

SOLUNA
FINE ART