

# SOLUNA

FINE ART

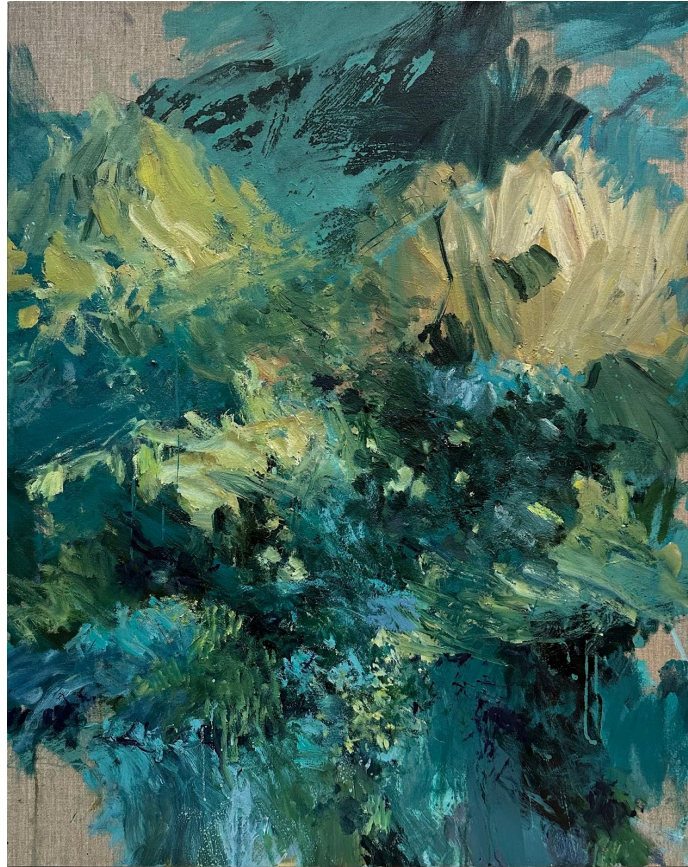
*Scenery of My Mind*

**Rosalyn Ng (b. 1993 in Hong Kong)**

Date: 20 June - 3 August 2024

Opening Reception: 20 June (Thursday) 6 - 8pm

Venue: Soluna Fine Art, GF, 52 Sai Street, Sheung Wan, Hong Kong



Rosalyn Ng, *Let Me Photograph You in the Light*, 2023, Acrylic, oil on linen, 100 x 80 cm

*“Rosalyn Ng’s first solo exhibition, *Scenery of My Mind*, depicts her creative journey over the past year. Resembling the unique astronomical phenomenon of a total solar eclipse, the Sun represents her style, the Earth symbolizes the mediums employed in her artworks, and the Moon embodies the emotions and thoughts behind her works. Wandering between the Sun, Earth, and Moon, each stage of the creative process holds the unknown and answers. This exhibition allows viewers to experience the change of seasons within the artist’s mind.”*

Cyrus Lamprecht, *Total Solar Eclipse: The Abstract Destiny of Rosalyn Ng*

Soluna Fine Art is proud to present *Scenery of My Mind*, the first solo exhibition of Hong Kong artist Rosalyn Ng at the gallery. Born and raised in Hong Kong, Ng’s artistic endeavors have always transcended the confines of the urban environment, exploring and recreating her perception of the



# SOLUNA

FINE ART

world through abstract paintings. Featuring a brand new series of Ng's latest works, this exhibition explores the contradictions between nature and artificial elements, sensibility and rationality. Through her unique aesthetics, Ng seeks to navigate and find peace among the chaos of conflicting concepts. By expressing emotional tension through multidimensional layers of bold colors and textures, Ng's recent pieces are the reflection of her introspection and imagination, guiding viewers through the colorful and dynamic landscapes of her mind. Her brushstrokes portray the complexity and richness of human emotions, visually depicting the inner conflicts of the mind. The dynamic and unbridled movements in her paintings bring a sense of life and energy, like a series of resonating poems that capture the rhythm of thoughts. Through a deliberate selection of natural and man-made colors, Ng creates a visual narrative that delves into the relationship between organic and artificial elements, encouraging viewers to contemplate the intricate connections between the two. Join us on a journey through Rosalyn Ng's mind, immerse yourself in her vibrant world, and ponder the hidden depths of her artistic expression.

*Scenery of My Mind* will be on view at Soluna Fine Art from 20 June to 3 August 2024, with an opening reception on 20 June (Thurs) at 6 - 8 pm.

Please confirm your attendance [here](#) by clicking on the RSVP button.

## About Rosalyn Ng

**Rosalyn Ng** (b. 1993, Hong Kong) graduated from Chelsea College of Arts, University of the Arts London, majoring in Fine Art in 2015. Her works translate nascent emotions into organic mark-making expressions. While she is involved in the active creation process, her purpose lies in captivating viewers through multidimensional layers of bold colors and textures. Despite the seemingly spontaneous placement of colors and forms, her paintings allude to imaginary scenes, invoking a blend of complicated, mixed feelings of bitterness and sweetness in viewers. After graduation, Rosalyn has been diligently committed to her artistic practice by developing different styles and obtaining formal education in art criticism. Her works have been exhibited in London, Amsterdam, and Hong Kong from several online to offline exhibitions and publications, and had her first solo exhibition 'Lonely Island' in YueJin Art Museum in Taiwan in 2022.

\* \* \*



# SOLUNA

FINE ART

## About Soluna Fine Art

**Soluna Fine Art** is a gallery specializing in contemporary fine art and craft. Our mission is to revitalize multicultural aesthetics and philosophy by showcasing exquisite works by established and emerging artists with traditional values in contemporary dialogue. Works by artists represented by Soluna Fine Art can be found in private collections and institutions worldwide. Our annual program includes exhibitions, fairs, educational initiatives, and multi-disciplinary collaborations on an international level.



Soluna Fine Art

GF, 52 Sai Street, Sheung Wan, Hong Kong

Opening hours: Tuesday - Saturday, 10am – 6pm

For press inquiries, please contact:

Bess Yung: [bess@solunafineart.com](mailto:bess@solunafineart.com) or +852 2955 5166

Download Press Kit:

<https://drive.google.com/drive/folders/1v1okpuLIZ2WW8juzWogUiVsjLXTICr24?usp=sharing>

Highlight Artwork Image:

[https://drive.google.com/drive/folders/1JHKJBehfY9XNF0WNIDTqR86oE5jfZRt\\_?usp=drive\\_link](https://drive.google.com/drive/folders/1JHKJBehfY9XNF0WNIDTqR86oE5jfZRt_?usp=drive_link)

Critic Writing | *Total Solar Eclipse: The Abstract Destiny of Rosalyn Ng*, Cyrus Lamprecht

[https://drive.google.com/file/d/1IPIIZMNqsPEiaKo6Onm3Dyogi0aLNQ\\_T/view?usp=drive\\_link](https://drive.google.com/file/d/1IPIIZMNqsPEiaKo6Onm3Dyogi0aLNQ_T/view?usp=drive_link)

Follow Soluna Fine Art:

Instagram ([@solunafineart](https://www.instagram.com/solunafineart)),

Facebook ([facebook.com/SolunaFineArt](https://www.facebook.com/SolunaFineArt)),

Artsy ([artsy.net/soluna-fine-art](https://www.artsy.net/soluna-fine-art))

[#SolunaFineArt](https://www.instagram.com/SolunaFineArt)



# SOLUNA

FINE ART

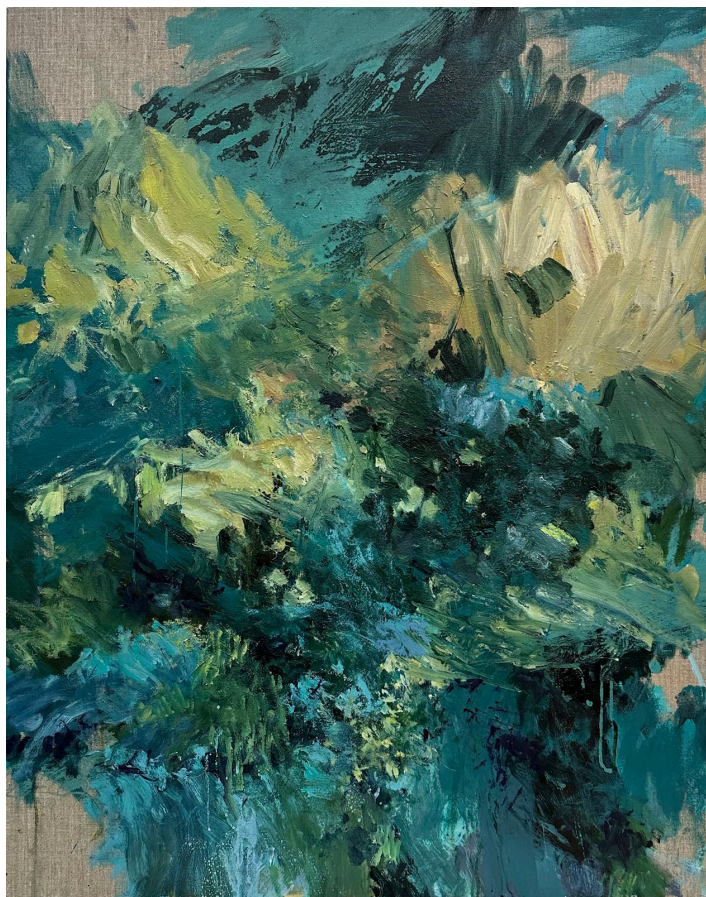
思緒的景緻

**吳芮慇（1993年生於香港）**

展出時間：2024年6月20日至8月3日

開幕酒會：2024年6月20日（星期四）下午6時至8時

地點：香港上環西街52號地下 Soluna Fine Art



吳芮慇，〈Let Me Photograph You in the Light〉，2023，塑膠彩油畫麻布，100 x 80 厘米

「若要比喻吳芮慇的創作過程為日全食這一個獨特的天文現象，太陽就是屬於她的風格、地球代表在畫作中所運用的媒介，月亮則象徵著作品背後的情感和思緒。每一個階段都存在著未知與答案，藝術家的心路歷程就像在太陽、地球和月亮之間徘徊。此次的展覽讓觀賞者在空間內，經歷了不只是屬於大自然的四季變遷。」

— 林靖風 《日全食：吳芮慇的抽象命運》

Soluna Fine Art誠意呈獻香港新生代藝術家吳芮慇與畫廊合辦的首個個人展覽「思緒的景緻」。於香港土生土長，吳氏的創作一直突破煩囂都市的局限，以繪畫取代語言探索世間萬物，在畫布上重構本人的思想世界。是次展覽將會展出一系列吳氏的最新作品，整體概念圍繞探索自然和人為、理性與感性等乍看矛盾但實質共存的概念，以吳氏獨到的美學帶領觀眾感受對立之中的和諧。吳氏



# SOLUNA

FINE ART

一向擅長運用抽象筆觸表達豐富情感張力，是次個展就如吳氏的心靈圖景，以筆觸將千絲萬縷的思緒具象化。吳氏筆下的線條風格多變，既有讓人聯想到幽靜密林的平和療癒，亦有如同風雨狂嘯的複雜混亂，就如人類多變的內心一樣，充分體現理性與感性的拉扯，用畫筆表現出內在聲音之間的互相角力。吳氏熱愛閱讀詩詞文學，其作品亦如一篇篇字字鏗鏘的詩篇，隨著顏色反映心情跌宕，仔細觀察筆觸的流動，沿著顏料的動態繪出抑揚頓挫。吳氏的用色靈感也源於生活中的觀察和想像，以象徵人造的強烈色彩，對比源於大自然的柔和色調，帶來視覺上的衝擊。誠邀觀眾踏進吳氏內心深處的秘密庭園，感受吳氏的創作中所蘊含的豐富情緒，讓彼此的靈魂赤裸交匯。

「思緒的景緻」將於2024年6月20日至8月3日期間展出，並於6月20日（星期四）下午6時至8時舉行開幕儀式。

請透過[連結](#)內的RSVP按鈕確認出席。

## 關於吳芮慇

**吳芮慇** 1993年生於香港，在2015年畢業於倫敦藝術大學切爾西藝術學院藝術系。吳氏擅長在作品中以原始的線條表達內心初生的感受。在創作過程中，她選用大膽的顏色和筆觸於畫布上疊加層次，利用兩者之間的碰撞來吸引觀眾。其作品的色彩及形態看似隨意鋪排，卻是源自於想像中的景象，帶給觀眾一股既苦澀又甜蜜的複雜感受。畢業後，吳氏於創作路上探索不同的風格，並在藝術評鑑方面繼續深造。她曾在倫敦、阿姆斯特丹和香港的展覽和實體出版物中展出作品，並在2022年於台灣月之美術館舉辦首個個人展覽「孤島」。

\* \* \*

## 關於Soluna Fine Art

**Soluna Fine Art**是一家精於當代藝術和工藝的畫廊，致力於展示成熟和新興藝術家兼備現代詮釋意義和傳統價值的作品，激發人們對多元文化美學和哲學的興趣。Soluna Fine Art 所代理的藝術家作品均被納入世界各地的私人收藏和機構。我們歷年的項目包括展覽、博覽會、教育計劃和國際的多元合作項目。



Soluna Fine Art

地址：香港上環西街52號地下

營業時間：星期二至星期六 | 上午十時至晚上六時



G/F, 52 Sai Street, Sheung Wan | [www.solunafineart.com](http://www.solunafineart.com) | [contact@solunafineart.com](mailto:contact@solunafineart.com)

# SOLUNA

FINE ART

任何媒體查詢，請聯絡：

Bess Yung 翁溢詩： [bess@solunafineart.com](mailto:bess@solunafineart.com) 或 +852 2955 5166

下載媒體資料：

<https://drive.google.com/drive/folders/1v1okpuLIZ2WW8juzWoqUiVsjLXTICr24?usp=sharing>

精選作品：

[https://drive.google.com/drive/folders/1JHKJBehfY9XNFOWNIDTqR86oE5jfZRt\\_?usp=drive\\_link](https://drive.google.com/drive/folders/1JHKJBehfY9XNFOWNIDTqR86oE5jfZRt_?usp=drive_link)

藝評 | 林靖風 《日全食：吳芮慇的抽象命運》

[https://drive.google.com/file/d/1IPIZMNqsPEiaKo6Onm3Dyogi0aLNQ\\_T/view?usp=drive\\_link](https://drive.google.com/file/d/1IPIZMNqsPEiaKo6Onm3Dyogi0aLNQ_T/view?usp=drive_link)

關注 Soluna Fine Art:

Instagram ([@solunafineart](https://www.instagram.com/solunafineart)),

Facebook ([facebook.com/SolunaFineArt](https://www.facebook.com/SolunaFineArt)),

Artsy ([artsy.net/soluna-fine-art](https://www.artsy.net/soluna-fine-art))

[#SolunaFineArt](https://www.instagram.com/SolunaFineArt)

