



Artist News Clippings

SOLUNA
FINE ART



Jon Poblador | b.1974, the Philippines

SOLUNA
FINE ART



SUMMARY

English

- **Newsgd.com** (28 Apr, 2017)
- **Galleries Gal** (11 Sep, 2021)
- **Chairmen** (21 Sep, 2021)
- **Ri Galerie** (28 Sep, 2021)
- **Galleries Gal** (19 May, 2022)

Chinese

- **Ztylez** (10 May, 2022)
- **Yahoo** (16 May, 2022)
- **Home Journal** (16 May, 2022)
- **Culture Plus Asia** (19 May, 2022)

**Please note: next pages ordered by date of release (from En to Cn).*



Search...

- HOME
- NEWS
- CULTURE
- VISIT GUANGDONG
- LIVING IN GUANGDONG
- GATEWAY TO GD
- PHOTO & VIDEO



Specials > Guangdong expats > Collections

Jon Poblador

2017-Apr-28 Source: Newsgd.com

We met Jon Poblador, an American artist, during his exhibition at 103 gallery (which hosts an exhibition related to design and art each month. After arriving in Guangzhou in 2014, he is now also working in an international school as an art tutor. But he feels more relaxed when he shuts himself in his studio to paint and draw, or when he sneaks out to participate in artistic projects on his holidays.

In his latest exhibition held in Guangzhou 103 gallery, which is titled Visible Meditation, Jon Poblador uses multiple ways to express the idea of meditation in a visible way. This exhibition presents his art pieces in three parts, including his minimalist paintings and drawings.



Jon POBLADOR

Most popular Day | Week | Month

- 1 Delegate's Story | How a millennial improves lives of Guangdong farmers?
- 2 Policies for Portuguese-speaking countries' corporations to enter the...
- 3 Investment promotion fair held to enhance automobile industrial suppl...
- 4 Discover charm of Gankeng Hakka Town through the lens
- 5 Cooperation between Japan and Guangdong sees more possibilities:...

Don't Miss

Start of Summer | Explore 24 solar terms along the Tropic of Cancer

People enjoy Labor Day holiday in Guangdong

Dramas and concerts await to enjoy in May in Guangzhou

Oujia Terrace, a destination to enjoy spring ploughing in Guangdong

Specials



1. Q : Could you first introduce yourself to people who don't know about you? Like what makes you come to Guangzhou? What are you doing now?

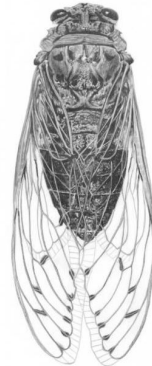
A : I moved to Guangzhou in July 2014 to work as a high school art teacher at Nansha College Preparatory Academy. I wanted to leave the United States to experience new things.

2. Q : Why do you want to do this exhibition with 103store? What is your expectation about this exhibition?

A : For the past few years I have been making paintings and drawings continuously during my free time at night and on weekends. Artists communicate through their work and if my paintings just stay in my studio, then what is the point of making them? They need to go out and see the world and so I see this exhibition at the 103store as an opportunity to expose me and my work to the public here in Guangzhou. I expect to meet new people, talk about my work, and to explain what I do and why I do it.

3. Q : The batch of exhibits are mostly created in your Guangzhou studio, do they have some kind of connection with Guangzhou city?

A : Sometimes, yes. I often name paintings using geological landmarks so, for example, I have a painting called Baiyun Mountain. As I said, I am always influenced by the things I see around me.



4. Q : What do you like or don't like about Guangzhou?

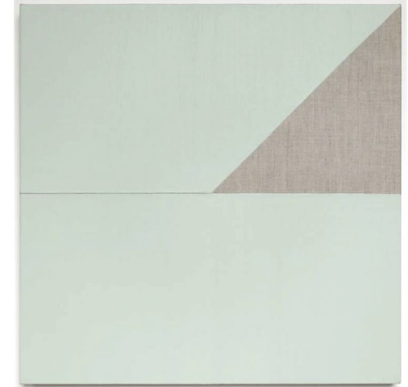
A : I like Guangzhou because I think there's a lot of potential here for me as an artist. It is a vibrant, major metropolitan city. What I don't like about it (and maybe this is due to language barriers or my unfamiliarity) is that it's difficult for me to find a visual arts community that is outside of traditional / academic / representational painting. I need to push myself creatively and philosophically and sometimes having people with a similar desire or vision helps with that. A lot can happen when artists sit around for a long time drinking tea or coffee. Ha ha.

Another one is art supplies. I don't like buying art supplies online because I prefer to physically touch them. I have not seen an art supply store in the city that carry a wide variety of supplies like I have visited in Beijing.

5. Q : Being an artist is not easy to many, how did you come to be involved? What makes you keep creating ?

A : Ever since I was a teenager I knew I wanted to do something within the visual arts. I fell in love with painting when I first went to college and I did not question what I was doing or how my decisions would be affecting my future. It's about following a dream. Of course I am very fortunate to earn a living as a teacher but, honestly, I am most happy when I am working in my studio.

(By Jecey)



Apache Junction, Acrylic on Linen, 11.2016, 60 x 60 cm



galleries gal Art in Hong Kong

← BACK TO ALL EVENTS

Jon Poblador: Repetition Is a Form Of Change at Galerie Koo

SATURDAY, SEPTEMBER 11, 2021, 2:00 PM

–

FRIDAY, OCTOBER 15, 2021, 6:00 PM

HONG KONG, HONG KONG (MAP)

Often times Repetition is believed to be a sign of stagnation or lack of creativity, but Poblador proves it otherwise. Repetition is seen to Poblador as a platform to consolidate their thoughts and sublimate it into a better outcome.

Poblador is a contemporary painter best known for his monochromatic, minimalistic approach to art. He encourages viewers to enter a state of euphoria through the trance-inducing effect of concentrated repetition.

“Anything that repeats will always make some kind of pattern. I primarily work with geometric shapes because its orderliness is appealing to me. And so, a grid structure will naturally show up when rectilinear shapes repeat,” Poblador stated.

Opening Reception - 11 Sep (Sat) 2-6PM

Artist in attendance

Gallery address: 7/F Vogue Bldg, 67 Wyndham St, Central

POSTED IN ONGOING
TAGGED GALERIE KOO



Chairmen

<https://www.chairmen.hk/jonpoblador/>

Posted Sep 25, 2021



Chairmen - The Kidult Playground



HOME FASHION TRAVEL FOOD ARTICLES BRANDS EVENTS GALLERY VIDEOS

PRODUCTS CONTACT US

Home > Art Gallery & Exhibition > Jon Poblador "Repetition is a Form of Change"

ART GALLERY & EXHIBITION

JON POBLADOR "REPETITION IS A FORM OF CHANGE"

written by Pang April 2021-09-25



Jon Poblador 的畫作都是充滿grid line和重覆的pattern，按著大方向重覆而仔細去為填滿每一格。而畫每一個格以至一幅畫，過程都像凝固在一個屬於自己的框架而不受世俗打擾的空間，有如冥想的沈思過程，專注、靜心。

Poblador 畫畫時不只聽冥想的和平音韻，有時也聽電子音樂，或是播著紀錄片來聽。

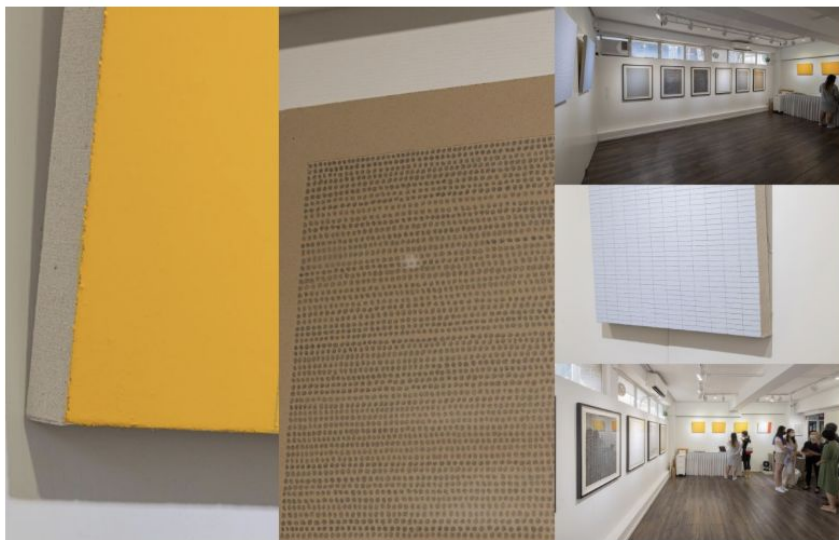
Type and hit enter...

繁體轉換

繁體中文 簡體中文

INSTAGRAM

No images found!
Try some other hashtag or username



在Poblador看來，重覆是鞏固思想並將其昇華為更好的結果的途徑。

作品在GALERIE KOO 雍廷序畫廊展出至10月中，可向Gallery預約參觀。

“Repetition is a Form of Change”

Artist: Jon Poblador

Medium: Graphite pencil on paper/ ink on paper/ oil on canvas



2021年9月28日

Jon Poblador: Repetition is a Form of Change

Repetition is a Form of Change is a solo exhibition by the American artist Jon Poblador, which through his works to express the meditative characteristics of repeated marking.

Prayer, meditation, and rituals are the foundation of many religions. They are essentially different forms of repetition, perhaps, this is one of the ways for people to connect with God. The artist regards his paintings and drawings as religious works of art. Marks, geometric figures and grids are prayers repeated again and again. Anything that is repeated will always form a certain pattern. He mainly uses geometric shapes because its orderliness appeals to me. Therefore, when the shape of the straight line is repeated, the grid structure will naturally appear.

He encourages the viewer to experience at his works in a simple way, the formal characteristics of shape, line, color, texture, etc. There is no performance, no narrative, and no illusion of anything else. However, the framework of the grid is an important factor that links them together.

#RepetitionIsAFormOfChange
#JonPoblador



共享



galleries gal Art in Hong Kong

← BACK TO ALL EVENTS

Jon Poblador: Sanctuary at Soluna Fine Art

THURSDAY, MAY 19, 2022, 4:00 PM –
SATURDAY, JUNE 25, 2022, 6:00 PM

HONG KONG, HONG KONG (MAP)

Soluna Fine Art is pleased to present **Sanctuary** 聖所, a solo exhibition by Jon Poblador (b.1971, Quezon City in the Philippines). **Sanctuary** 聖所 is the artist's first exhibition with Soluna Fine Art, and we are glad to showcase his minimalist works characterized by monochromes, repetitions, and mark-making.

Jon Poblador has always lived a nomadic life, including in the Philippines, America, Singapore, China, France, and now resides in Hong Kong. Poblador's artistic practice shifted from figurative to conceptual pieces later in his career. His works initially consisted of tightly packed lines of text before evolving to dots, triangles, rectangles, and eventually the grid system he primarily produces today. As he keeps on repeating the buildup process, he realized there is a higher personal meaning behind the action itself.

To him, his paintings are the 'accumulations' of his devotional acts by painting on the individual grid sections with thin acrylic layers, similarly, practicing virtue requires the same buildup as well. His canvas then acts as a 'sanctuary' for him to explore the endless possibilities of how duality can be represented, from order-disorder to perfection-imperfection through the slightest deviations of the grid squares.

POSTED IN ONGOING
TAGGED SOLUNA FINE ART



Ztylez

<https://ztylez.com/art/exhibition/2022/05/10/53341/>

Posted May 10, 2022

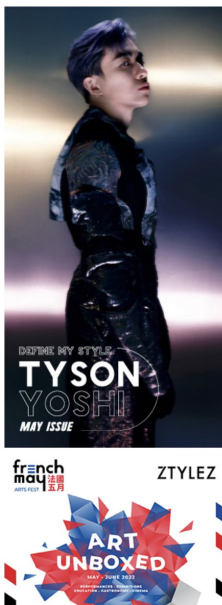
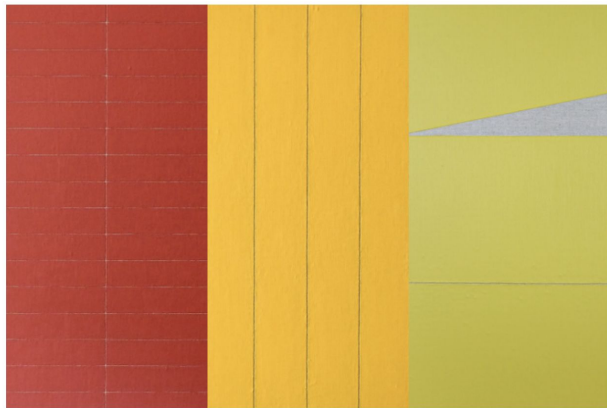
ZTYLEZ

HOME EDITORIAL FASHION ART BEAUTY DELUXE LIFE MAN ART SPACE STORE CONTACT US

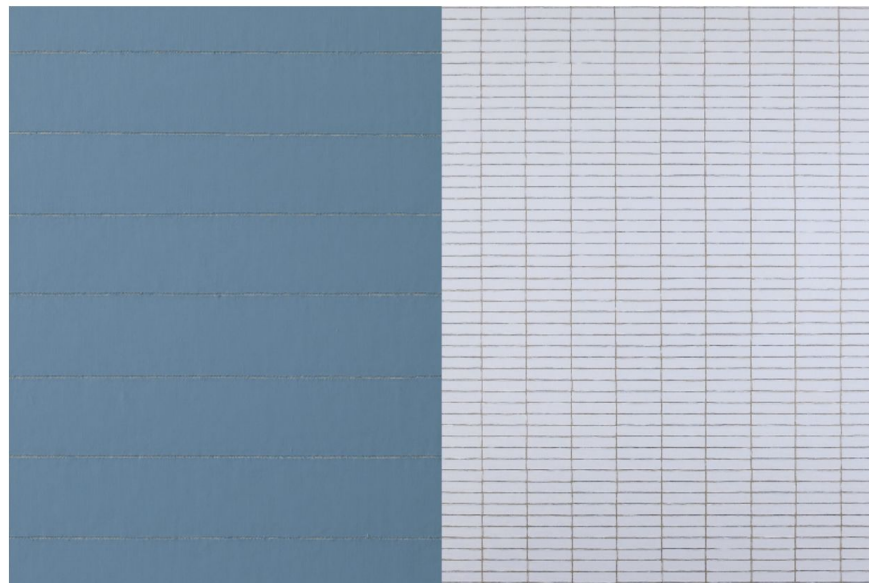
EXHIBITION | May 10, 2022

視創作為心靈的修煉場！美籍藝術家 Jon Poblador 展出療癒人心的極簡抽象單色畫作

by Ruby Yiu



每個創作者的繪畫節奏也不盡相同，一幅構圖相對簡約的單色畫作，可能用上一段你猜想不到的漫長時光。近期，Soluna Fine Art 呈獻菲律賓裔美國當代畫家 Jon Poblador 的個人展覽「Sanctuary 聖所」，共展示 18 幅藝術家具標誌性的極簡主義概念性作品。在介乎修煉的繪畫過程中，Poblador 傾注了他對藝術的虔誠與沉默禱告，讓觀者遊走在規律和失序之間。



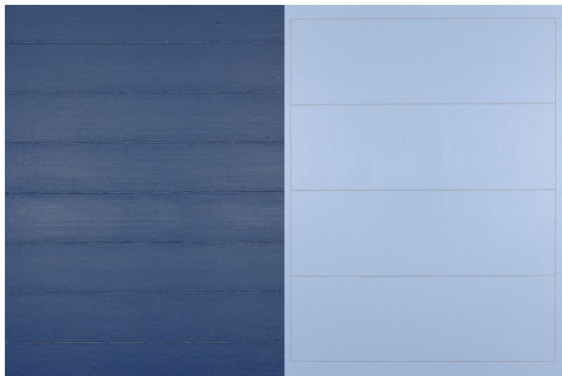
左：《Untitled (Blue)》2022 Acrylic linen over panel 35.5 x 28 cm
右：《Agua Fria》2021 Acrylic on linen over panel 76 x 61 cm



左：《Sea Bird》2018 Acrylic on linen over panel 35.5 x 46 cm

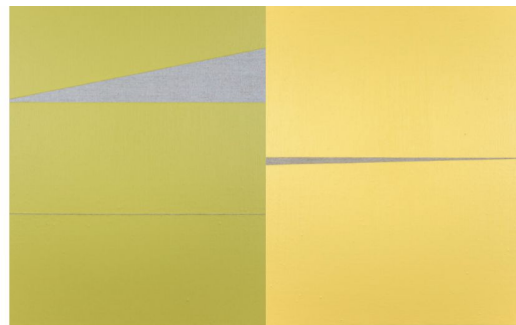
藝術從最早期的具象作品轉向現在的抽象主義，中間經歷了一段發掘自我的旅程。藝術家在香港定居之前曾在多個國家生活過，這種遊牧生活讓他無法無法深入自己的精神世界。後來他通過反覆抄寫《聖經》內的段落，找到了自己的心安之處。

宗教的力量讓他的筆觸注入信念，Poblador 形容自己的創作緩慢而耗時，長時間的專注使得繪畫變成一個讓他冥想的过程。在持續的出神狀態下，繪畫也成了一种自我療癒的方式。Poblador 表示：「我喜歡把臉靠近畫筆從而觀察細膩的塗顏料過程，這是專注和冥想的一部分並使我沉迷。所以這無關忍耐，而是關於愛。」



左：《Thule (Version 02)》2021 Acrylic on linen over panel 61 x 61 cm

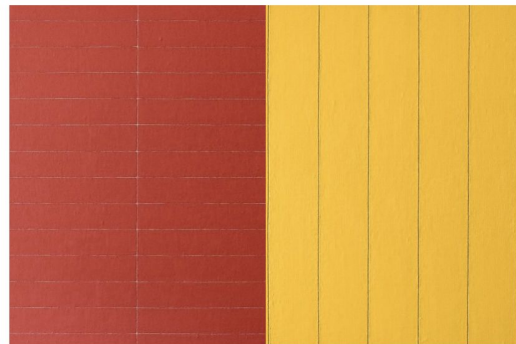
右：《Nockamixon》2019 Acrylic on linen over panel 76 x 61 cm



左：《Quakertown》2018 Acrylic on linen over panel 61 x 51 cm

右：《Shipaicun》2021 Acrylic on linen over panel 61 x 51 cm

現階段的作品中，圓點、三角形、長方形、格子等重複性的幾何圖案成為藝術家的創作主軸。對藝術家而言，他最常用的格子並非限制，而便為他提供了一個藝術空間。他的畫布就像一個「聖所」，通過格子之間的細微差別來表現二次元的無限可能，從整齊和失序，從完美到不完美。



左：《Untitled (Red)》2021 Acrylic on linen over panel 61 x 61 cm

右：《South Dakota》2021 Acrylic on linen over panel 40.5 x 51 cm

除了專注過程的面向，藝術家經常根據他對訪過的地方，如墨西哥普拉亞德爾卡曼、美國獵河和南達科他州等地的直覺，在調色盤中精簡至單一的原色。同時，通過使用永恆不變的原色和黑白，希望能不干擾觀眾對其作品的觀點，不受外界詮釋的影響，單純感受畫作的力量。

大家不妨參觀展覽，說不定能從藝術家作品中找到一股平靜內心的力量。

「Sanctuary 聖所」

日期：2022年5月19日至6月25日（周日、一休息）

時間：上午10時至下午6時

地點：Soluna Fine Art 上環西街52號



Yahoo! 新聞

<https://hk.news.yahoo.com/前往居港菲裔美籍藝術家個展-覽極簡抽象單色畫作-080050319.html>

Posted May 16, 2022



566人追蹤 總覽

前往居港菲裔美籍藝術家個展，一覽極簡抽象單色畫作

Home Journal
2022年5月16日



從5月19日起，大家就可前往由當代藝術畫廊Soluna Fine Art呈獻的居港菲裔美籍藝術家Jon Poblador個展「Sanctuary 聖所」參觀，一覽18幅基於極簡主義創作、並由不少細小的幾何圖案所組成的單色畫，當中更展出9幅新作。

Jon Poblador在定居香港前，曾在菲律賓、新加坡、美國和中國等地生活，長期處於輾轉遷徙的狀態，令他決心尋找一個立足點，深入地挖掘自己的精神世界，從而導致藝術創作亦從早期的具象作品，如密密麻麻的文字，轉向現在的抽象主義，包括圓點、三角形、長方形和現在最常使用的格子元素。

通過使用永恆不變的原色和黑白色創作，Jon Poblador希望創作不會受到外界詮釋的影響，讓觀眾能保持自己對藝術品的獨有看法。

Jon Poblador表示：「基於我在創作過程中所給予的信念和奉獻，我會形容我的作品為宗教繪畫。緩慢、耗時的創作，尤其是忍耐是無法堅持的。忍耐是指容忍不達時不會發怒，我喜歡把繪畫近畫筆從而觀察細節的塗料過程，這是專注和冥想的一部分並使我沈迷，所以這無關忍耐，而是關於愛。」

「Sanctuary 聖所」

日期：2022年5月19日至7月25日

地址：上環西街52號 · Soluna Fine Art

圖片來源：Soluna Fine Art

J.P.Morgan
華爾街大通

54843

恒指牛

收回價： 20,000點
實際積桿： 31.6倍

50543

恒指熊

收回價： 20,870點
實際積桿： 40倍

熱門新聞

1. 收管角克騰嫩妹！英國人夫10日滿陷
2. 停工一年多 樓明燈酒店傳已全線結業
3. 勇董推跌5萬元「天線得得B」 家長賠償3萬：完全冇喇嚟住、惡我個仔
4. 騰訊的馬化騰轉發一箱有關中國經濟的文章 罕見地表達無奈
5. 吳亦凡消失10個月突曝醜聞 疑行踪曝光驚傳已出獄



前往居港菲裔美籍藝術家個展，一覽極簡抽象單色畫作

Jon Poblador, Red, 2019, Acrylic on linen over panel, 35.5 x 28 cm

Jon Poblador, Red, 2019, Acrylic on linen over panel, 35.5 x 28 cm



前往居港菲裔美籍藝術家個展，一覽極簡抽象單色畫作

Jon Poblador, Touching Fish (Version O2), 2022, Acrylic on linen over panel, 35.5 x 28 cm

Jon Poblador, Touching Fish (Version O2), 2022, Acrylic on linen over panel, 35.5 x 28 cm



Home Journal <https://www.homejournal.com/zh/article/前往居港菲裔美籍藝術家個展%2C一覽極簡抽象單色畫作/>

Posted May 16, 2022

HOME JOURNAL

ASIA DESIGNERS COMMUNITY

HOME SOLUTIONS

HOME JOURNAL GUIDE



家居裝潢 生活品味 人物專訪 市場投資 雜誌專題 活動盛事



生活品味

前往居港菲裔美籍藝術家個展，一覽極簡抽象單色畫作

By Home Journal
2022-05-16



從5月19日起，大家就可前往由當代藝術畫廊Soluna Fine Art呈獻的居港菲裔美籍藝術家Jon Poblador個展「Sanctuary 聖所」參觀，一覽18幅基於極簡主義所創作、並由不少細小的幾何圖案所的單色畫，當中更展出9幅新作。

Jon Poblador在定居香港前，曾在菲律賓、新加坡、美國和中國等地生活，長期處於輾轉遷徙的狀態，令他決心尋找一個立足點，深入地挖掘自己的精神世界，從而導致藝術創作亦從早期的具象作品，如密密麻麻的文字，轉向現在的抽象主義，包括圓點、三角形、長方形和現在最常使用的格子元素。

通過使用永恆不變的原色和黑白色創作，Jon Poblador希望創作不會受到外界詮釋的影響，讓觀眾能保持自己對藝術品的獨有看法。

Jon Poblador表示：「基於我在創作過程中所給予的信念和奉獻，我會形容我的作品為宗教繪畫。緩慢、耗時的創作，光是靠忍耐是無法堅持的。忍耐是指容忍不遇時不會發怒。我喜歡把臉靠近畫筆從而觀察細膩的塗顏料過程，這是專注和冥想的一部分並使我沈迷。所以這無關忍耐，而是關於愛。」

「Sanctuary 聖所」

日期：2022年5月19日至7月25日

地址：上環西街52號，Soluna Fine Art

圖片來源：Soluna Fine Art

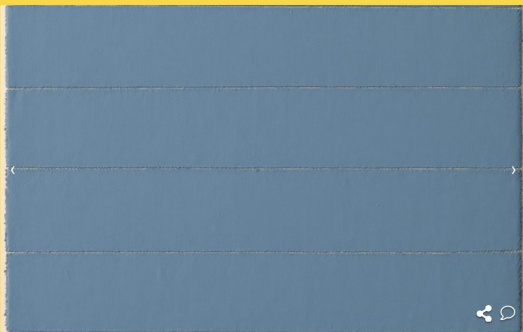


Jon Poblador, Red, 2019, Acrylic on linen over panel, 35.5 x 28 cm

Tags: 香港 藝術 展覽 SolunaFineArt JonPoblador Sanctuary聖所



#繪畫



JON POBLADOR: 聖所
05月19日 - 06月25日
免費
Soluna Fine Art

活動詳情

Soluna Fine Art 誠意呈現 Jon Poblador 的個人展覽「Sanctuary 聖所」。本次展覽為藝術家 Poblador 在本畫廊的首次亮相，共展示 18 幅精緻主義的單色畫。藝術家以虔誠的信念不斷在作品中累積細小的幾何圖案。本次展覽將會包含 9 幅新作。「Sanctuary 聖所」的展覽為二零二二年五月十九日至七月二十五日，開幕定於二零二二年五月十九日（星期四），下午四時至下午八時。

「基於我在創作過程中所給予的信念和尊敬，我會形容我的作品為宗教繪畫。緩慢、耗時的創作，光是靠忍耐是無法堅持的。忍耐是指容忍不竭時不會發怒。我喜歡把繪畫近畫筆從而觀察細膩的塗料過程，這是專注和冥想的一部分並使我沈迷。所以這無關忍耐，而是關於愛。」

— Jon Poblador, <Soluna Fine Art 與藝術家的訪談>

在定居香港前，藝術家曾在菲律賓、美國、新加坡、中國和法國生活過。他的大部分遊牧生活都被無常和移動所定義。這或許能解釋為什麼他不得不找一個立足點，並更深入地挖掘自己的精神世界。結合因為搬家帶來的內在與外在的變化，藝術家的藝術創作也發生了變化，從早期的具象作品轉向現在的抽象主義。這種劇烈的轉變始於他發掘自我的旅程，通過反覆抄寫《聖經》內的段落來了解他與生俱來但卻未能好好聯繫的基督教。因此藝術家的早期作品有密密麻麻的文字組成，然後演變成圓點、三角形、長方形和現在最常使用的格子。

相比起容易理解的文字，藝術家意識到他重複性的行動背後隱藏著更深層的意義。他的畫作是透過逐漸累積，虛心地為每一個方格塗上一層層的丙烯顏料的成果。同樣地，他創作的過程就如人的美德一樣，兩者也是要長時間累積下來的。當我們在觀賞他的作品時，觀眾難以估計藝術家最後塗上了多少層顏料。這正正也反映了人累積陰德的次數是只有自己才知道的。準確來說，這就是藝術家癡迷於格子的原因。格子並不是作為一種限制，而是能夠讓藝術家重複地繪畫，每一個筆觸的姿勢代表他對藝術的虔誠與沈默禱告。在視覺效果方面，格子為藝術家提供了一個藝術空間。他的畫布就像一個「聖所」，通過格子之間的細微差別來表現二次元的無限可能，從規律和失序，從完美到不完美。

除了專注過程的面向，藝術家經常根據他對到訪過的地方，如墨西哥普拉亞德爾卡曼、美國鹽河和南達科他州等地的直覺，在調色盤中精簡至單一的原色。同時，通過使用永恆不變的原色和黑白，希望能不干擾觀眾對其作品的觀點，不受外界詮釋的影響。此外，缺失了顏色和光滑表面的面板或許可以使觀眾思考作品的性質，「我是在看一個物件抑或畫作？」以上談及由藝術作品延伸出來的力量，對藝術家而言，這對他虔誠的創作過程是一種間接讚美，且僅自己瞭解。「Sanctuary 聖所」因而成為一個保障藝術家創作過程和觀眾好奇心的展覽空間。

關於藝術家 / 主辦單位：

Jon Poblador (生於 1971 年，菲律賓奎松市) 是菲律賓裔美國當代畫家。他極簡風格的作品，因單色運用、重複性和標記製作的特點而著名。藝術家分別在美國的北伊利諾伊大學取得藝術學士學位，以及賓夕法尼亞大學獲得藝術碩士學位。他經常過着遊牧般的生活，曾經在菲律賓、美國、新加坡、中國和法國生活過。目前居住在香港並活躍於本地和美國的當代藝術界。他的作品曾在賓夕法尼亞州和亞利桑那的當代美術館，還有香港的雍廷序畫廊展出。

詳情

開始:
05月19日

結束:
06月25日

費用:
免費

活動分類:
#繪畫

主辦單位

Soluna Fine Art

電話:
29555166

電子郵件:
contact@solunafineart.com

網站:
www.solunafineart.com



The End

SOLUNA
FINE ART